



800-962-9790
527 Winthrop Street
P.O. Box 430 Rte. 44 • Rehoboth, MA 02769
508-336-9600 • fax: 508-336-9608
www.baystatett.com

Used Petroleum Trailer Spec's

Unit #:
Make: Fruehauf
Year: 1988
Serial #: 1H4T04320JL002301
Capacity: 11,800g
Compartments: F3400/1800/1100/2800/2700R
Barrel Shape: Straight Profile
Barrel Material: Aluminum
Internal Valves: Cable Operated
Overfill System: Scully Intellicheck
Hose Carriers: Full Length Hose Tray @ CS – Double Hose Tube @ SS
Fenders: Radius Style - Aluminum
Upper Coupler: Steel - Adjustable
Landing Gear: Steel – Crank Style – CS Operation
Bumper: Steel
Ladder: Aluminum @ Rear
Suspension: Propar Spring Suspension – Tandem Axle
Wheels: Steel - Painted
Tires: 11R24.5
Brakes: Drum
Miscellaneous:

- Trailer is equipped with Y-valves @ CS loadheads
- Trailer is manifolded @ SS to Single Outlet
- Trailer has 60" fitting cabinet @ CS with dividers
- Trailer suspension has been replaced with galvanized steel subframe































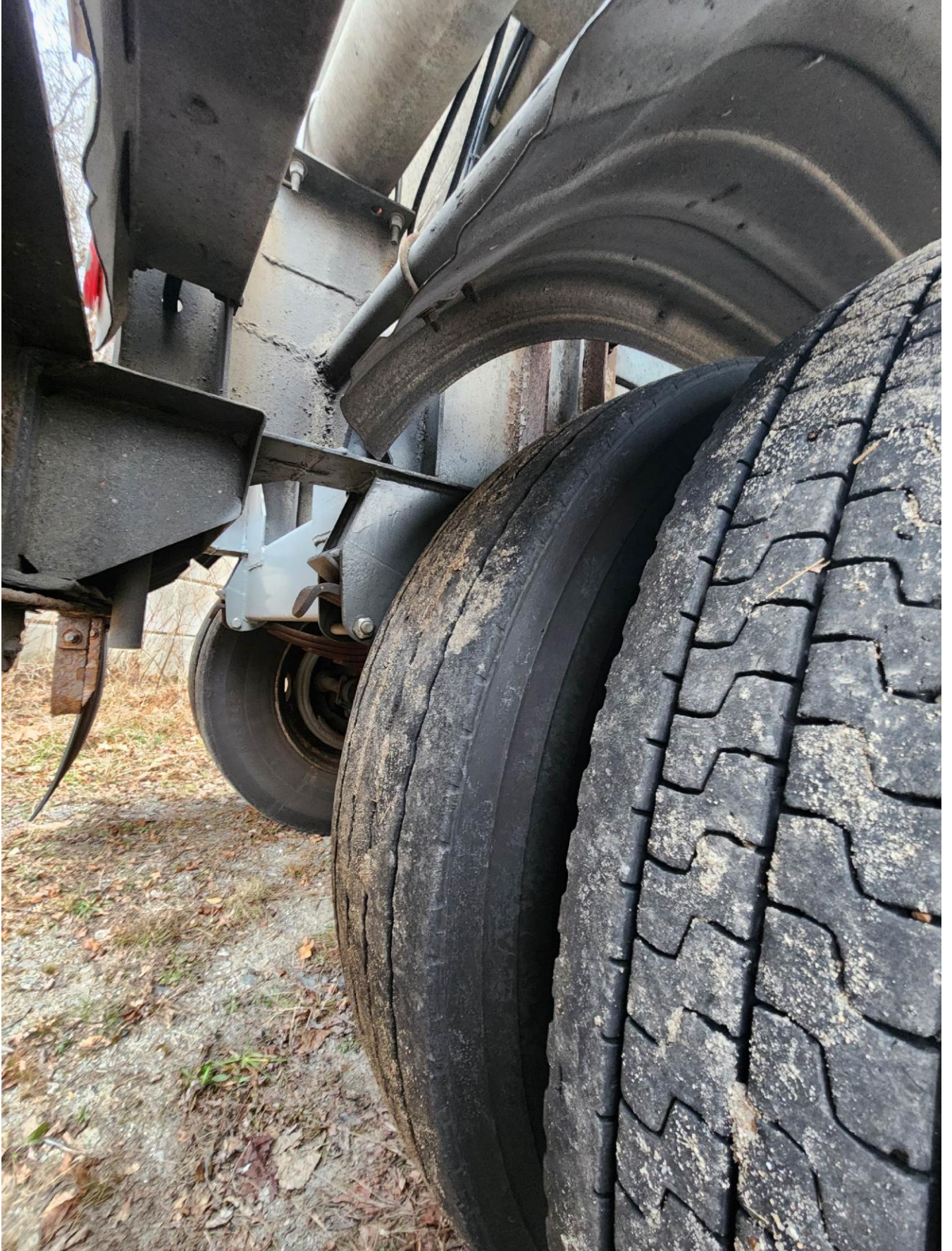
DALLAS
BRAND
MET.
COMPLIES
WITH
UL #113
DO NOT REMOVE
FOR REPAIRS
OR SERVICE
XOMD04037
CAUTION
DO NOT TOUCH
INTERNAL
PARTS
OR WIRING









































MFD. BY

FRUEHAUF TRAILER CORPORATION

SOUTHFIELD, MICHIGAN

GVWR **39,000** LB.

DATE OF MFG. **02/11/93**

GAWR ALL AT **23,000** LB.

WITH **11R225** TIRES

11R225 RIMS

TIRE PRESSURE **85**

P.S.I. COLD DUAL

TOWED VEHICLE WEIGHT RATING **39,000** LB.

THIS VEHICLE CONFORMS TO ALL APPLICABLE FEDERAL MOTOR VEHICLE SAFETY STANDARDS IN EFFECT ON THE DATE OF MANUFACTURE SHOWN ABOVE. ALL DATA SHOWN IS APPLICABLE AT HIGHWAY SPEEDS.

V.I.N. (SERIAL NO.)

1F11111111111111111111111111111111

TYPE

11R225

ISSUED 2-11

MODEL

11R225

X-CF2328-1 05-93

LIQUID and BULK TANK DIVISION
FRUEHAUF TRAILER CORPORATION
OMAHA, NEBR.

MOG'S NO. 431002301 DATE 8-87
SHEET NO. 806 SERIAL 78-87
DESIGN NO. 3114 PSIG. 150 REF. MAX
TEST DATE 8-87
MATERIAL SHEET NO. 5454-132 HEAD NO. 5454-0
WELD NO. 5356 LEAK TEST NO. 5081 LINING-NONE
CAPACITY 3400 1820 1100
WEIGHT 2200 2700 11800
MAX. WIND 75 MPH 8.5 PSI 1.5 G.P.M.
LIMIT 2.5 PSI 0.5 G.P.M.
ISSUED 2-11