



800-962-9790
527 Winthrop Street
P.O. Box 430 Rte. 44 • Rehoboth, MA 02769
508-336-9600 • fax: 508-336-9608
www.baystatett.com

Used Petroleum Trailer Spec's

Unit #:
Make: Heil
Year: 1987
Serial #: 1HLA3A7B5H7K53636
Capacity: 11,800g
Compartments: F3400/1800/1100/2800/2700R
Barrel Shape: Straight Profile
Barrel Material: Aluminum
Internal Valves: Cable Operated
Overfill System: Scully Intellicheck
Hose Carriers: Full Length Hose Tray @ CS – Double Hose Tube @ SS
Fenders: Heil – Flat Style
Upper Coupler: Steel - Adjustable
Landing Gear: Steel – Crank Style Operation @ CS
Bumper: Steel - Galvanized
Ladder: Aluminum @ Rear
Suspension: Reyco 21B Spring Ride Suspension
Wheels: Steel – Spoke Style
Tires: 11R24.5
Brakes: Drum
Miscellaneous:

- Trailer is equipped with Y-valves @ CS loadheads
- Trailer is manifolded @ SS to Single Outlet
- Trailer has 48” fitting cabinet @ CS
- Trailer suspension has been replaced with galvanized steel subframe



HEIL

HT
11' 6"

3 23 V EXTERNAL VESSEL
3 21 I INTERNAL VESSEL
3 21 P PRESSURE
3 23 K LEAKAGE
3 23 K EPA-27
3 23 DEP
DOT REG. CT 1280

1203
3

EMERGENCY SHUT-OFF

6"
GHT



HEIL

HT
11' 6"

3 23
3 21
3 21
3 23
3 23
3 23
3 23 DEP

12' 6"
HEIGHT

1203
3

EMERGENCY
SHUT OFF





























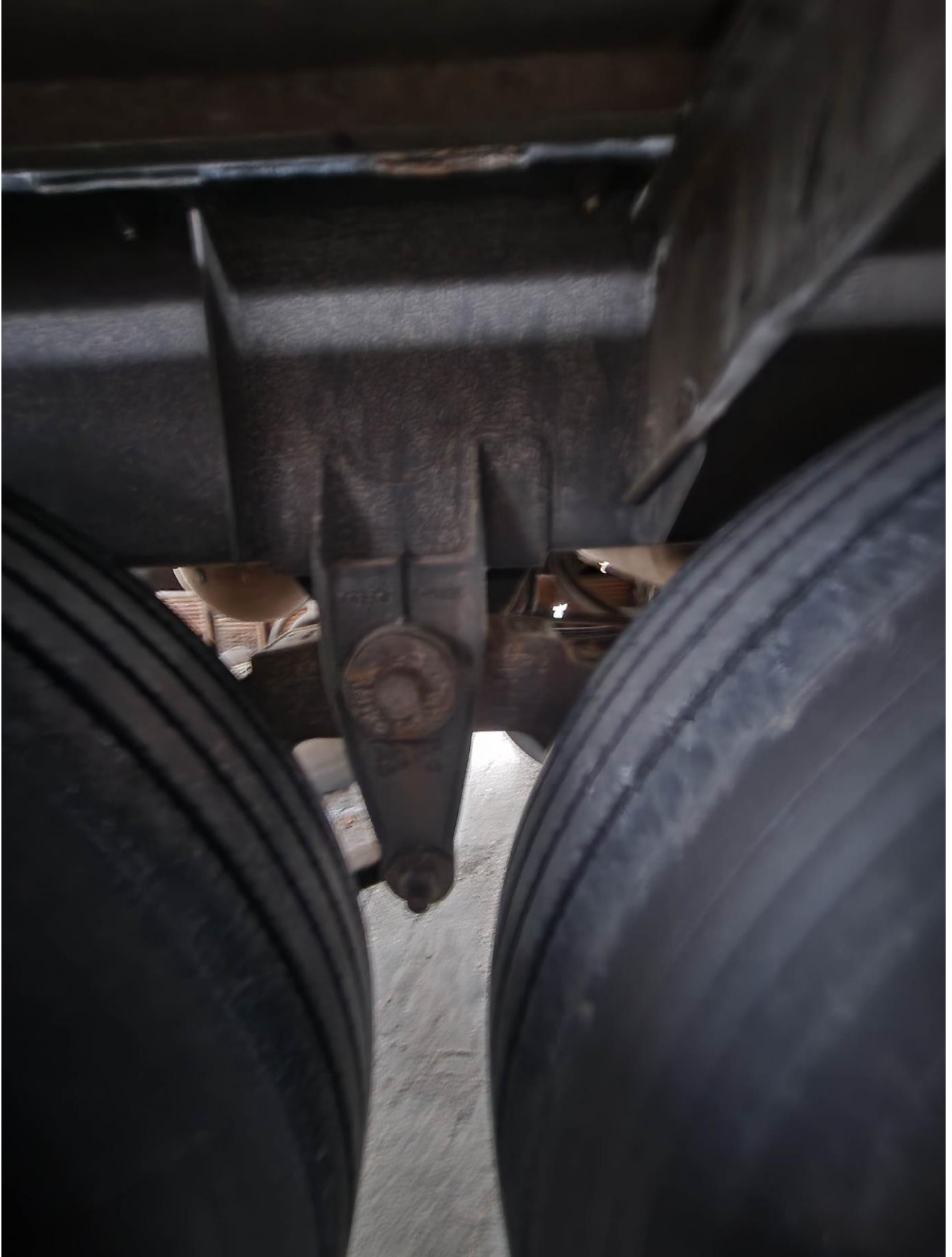










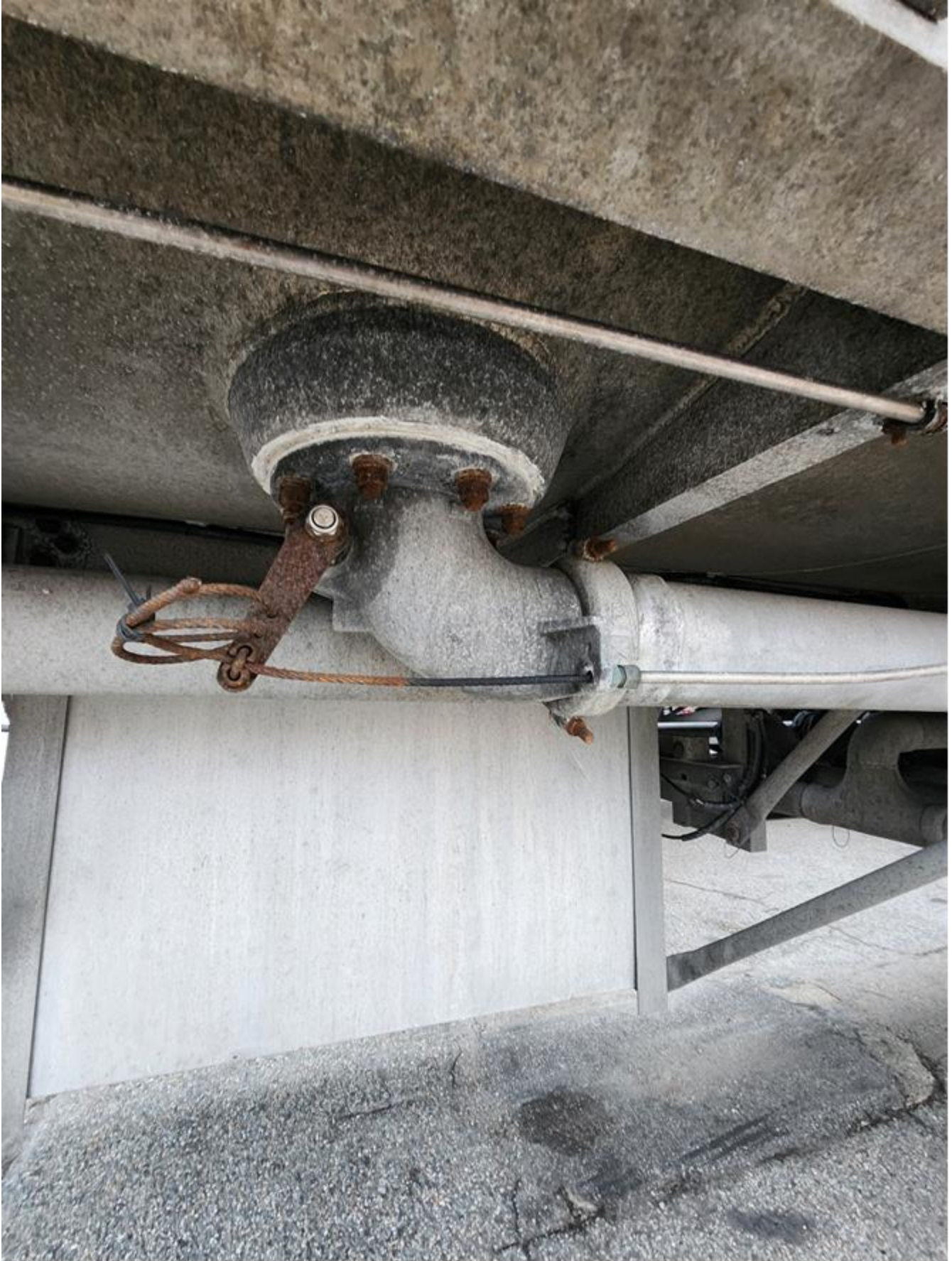


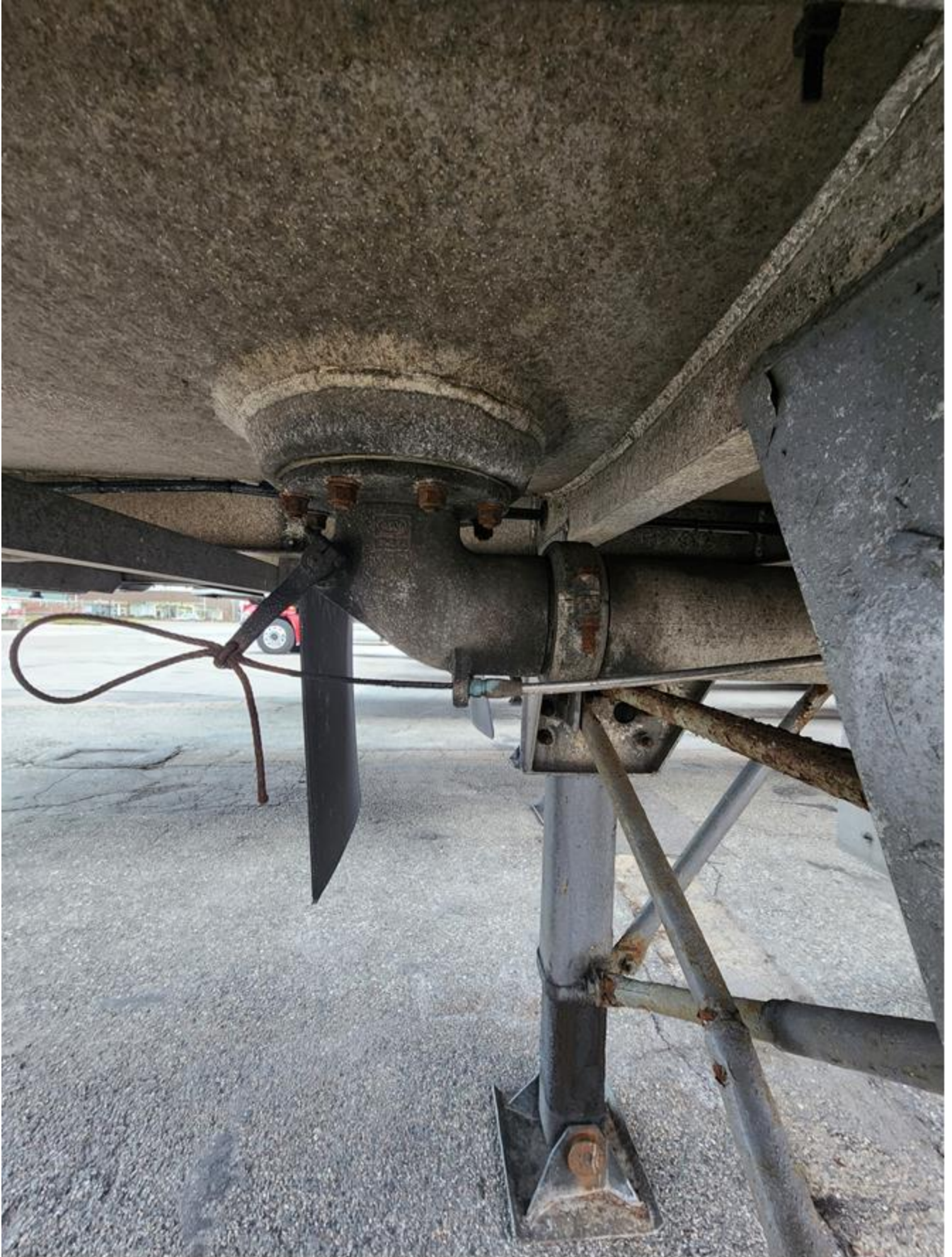












THE HEIL CO.
ATHENS, TN LANCASTER, PA. MILWAUKEE, WI. U.S.A
VIN: 1HLA3A7B5H7K53636 DATE OF MFG 6-87
GVWR 80000 LBS* GAWR ALL AXLES 22,500 LBS
WITH 11.00 X 24.5 G. DUAL TIRES AT 95 PSI COLD
ON 24.5 X 8.25 RIMS. CAPACITY 11800 GALS
TEST PRES. 3 PSIG
THIS VEHICLE CONFORMS TO ALL APPLICABLE U.S. FEDERAL MOTOR
VEHICLE SAFETY STANDARDS IN EFFECT ON THE DATE OF
MANUFACTURE SHOWN ABOVE. DUPLICATE
WARRANTED UNDER CURRENT PUBLISHED WARRANTY
*BASED ON UNIFORM WEIGHT DISTRIBUTION
212-1058

THE HEIL CO.
ATHENS, TN. LANCASTER, PA. MILWAUKEE, WI. U.S.A.

VIN DATE MFD ORIG. TEST DATE
D.O.T. MC- HEAD MAT'L WELD MAT'L
CERT. DATE SHELL MAT'L LINING MAT'L
MAX. PROD. LOAD LBS MAX. PROD. DENSITY LB/GAL
DESIGN PRESSURE PSIG TEST PRESSURE PSIG MAX. TEMP. °F
NOM. CAP. U.S. GAL.
CPT. CAP. U.S. GAL.
MAX. LOADING RATE NOT TO EXCEED PSIG TANK PRESSURE
MAX. UNLOADING RATE NOT TO EXCEED PSIG VACUUM, TANK PRESS.
MAX. AIR INLET FLOW FOR PRESSURE UNLOADING SCFM DUPLICATE
MFG. AT: ATH. LAN. MIL. MODEL YEAR
NR - INDICATES NOT RECOMMENDED NA - INDICATES NOT APPLICABLE

212-1059